



## **STRAMIT FarLap®**

**ROOF LAP JOINT SYSTEM**  
For Stramit Speed Deck Ultra® Roof Decking



**NOW AVAILABLE AS AN INDIVIDUAL  
UNIT OR A LONG ROLL**

p r o d u c t   t e c h n i c a l   s u p p l e m e n t

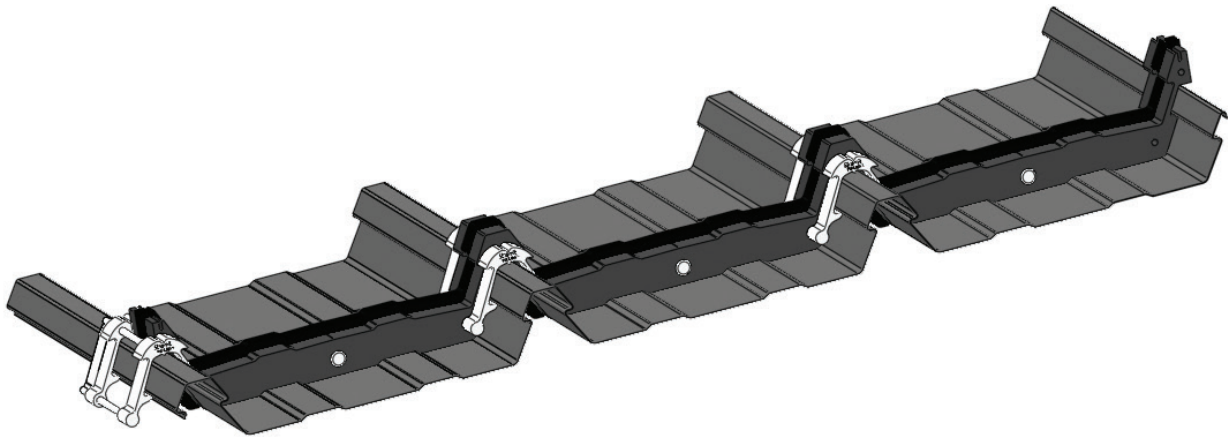


# STRAMIT FARLAP<sup>®</sup>

## ROOF LAP JOINT SYSTEM

For Stramit Speed Deck Ultra<sup>®</sup>  
Concealed Fixed Decking

### Selection & Specification



#### Features/Benefits

- Increased safety
  - smaller roofing crews
  - lighter, shorter sheets to carry
  - smaller pack mass
  - roof sheets easier to lay and handle.
- Low profile seal – enhanced visual roof continuity.
- Economical – low cost solution for long roofs.
- Suits Stramit Speed Deck Ultra<sup>®</sup> decking profile – for roof slopes as low as 1 degree.
- Sealed – for enhanced energy efficiency.
- Independently weather tested
  - peace of mind
  - confidence in system.
- Easy to use
  - snap-in-place for fast and reliable installation
  - can be installed at any support member along the roof run.
- Advantage at restricted access sites
  - shorter product lengths
  - shorter trucks
  - easier access
  - less storage space.
- Uniform purlin height – no step in supporting structure, no need for structural modification, and no additional purlin.
- High technology materials for structural connections and weather performance.
- Proven materials
  - provide a durable solution
  - preserve normal roof warranty.
- Shorter length sheets
  - lower transport and handling costs
  - smaller site crane required
  - less thermal expansion and contraction.
- Usable in multiple rows – allows long monoslope roofs.

#### IMPORTANT NOTICE AND DISCLAIMER

The information contained within this brochure is for general use and information only. Before application in a particular situation, Stramit recommends that you obtain appropriate independent qualified expert advice confirming the suitability of product(s) and information in question for the application proposed. While Stramit accepts its legal obligations, be aware however that to the extent permitted by law, Stramit disclaims all liability (including liability for negligence) for all loss and damage resulting from the use of the information provided in this brochure.

## Product Description

The **Stramit FarLap**<sup>®</sup> roof lap joint is a revolutionary patented system that changes the way long run roof decking is designed and installed. It provides a multiple sheet option for long length concealed fixed roofing projects that eliminates traditional step joints or the need for long on-site rolled sheets, without compromising the integrity of the roofing structure.

Designed specifically for *Stramit Speed Deck Ultra*<sup>®</sup> concealed fixed decking, the **Stramit FarLap**<sup>®</sup> roof lap joint system allows the installation of lapped sheets on standard purlin framing, without the need for conventional stepped jointing. The system provides a combination of a strong joint and a weather-resisting seal between lapped sheets.

The system is simply installed by clipping onto the ribs of the bottom sheet. The top, overlapping sheet is then pushed on to the **Stramit FarLap**<sup>®</sup> units, providing a structural connection.

The joint connectors and sealing foam are manufactured from high technology materials that provide strength and weather-resistance and preserve the existing roofing warranty.

## Applications

**Stramit FarLap**<sup>®</sup> roof lap joint system is specifically and exclusively designed to provide a sealed joint between overlapping sheets of *Stramit Speed Deck Ultra*<sup>®</sup> decking. It is suitable for all applications otherwise suitable for *Stramit Speed Deck Ultra*<sup>®</sup> decking. The unique low-profile overlapping arrangement allows for installation over support purlins that are in a single uniform plane regardless of cumulative roof run length, subject to normal drainage capacity limits.

## Materials

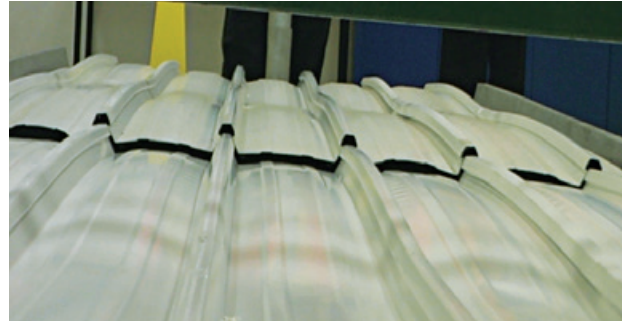
The joint connectors are moulded from DuPont™ Zytel<sup>®</sup> nylon, a strong material suitable for extreme roof environments. The durable sealing strips are a combination of soft and hard closed cell foam that accommodates sheeting profile tolerances and creates a weather resisting joint. The closed cell foam is similar to the infill strips used successfully in Australia for over 25 years.

## Thermal Expansion

All materials change in length in proportion to temperature change. On a very long roof sheet this movement must be accommodated at the sheet ends resulting in stresses and distortions that can lead to problems with fixings and attachments to flashings etc. Dividing a very long sheet run into a series of moderate lengths, with a low-profile **Stramit FarLap**<sup>®</sup> roof lap joint system between, will reduce the thermal movement at each sheet end to a substantially lower and manageable value.

## Testing

Testing for strength and weather resistance has been carried out by independent testing authorities and at the Stramit Research and Development laboratory. Testing was also carried out to investigate the effect of longitudinal sheet movement due to thermal expansion.



Strength: Testing to a simulated wind speed in excess of 200 km/h without failure.



Weather Resistance: A simulated rain/wind test (wind speed 58 km/h and water flow delivering 10 L/min run-off) resulted in no water penetration to internal roof space.

## Warranty

*Stramit Speed Deck Ultra*<sup>®</sup> roofs, insulated with foil-backed fibreglass blanket, and using the **Stramit FarLap**<sup>®</sup> roof lap joint system, will retain all normal warranties. Contact your local Stramit office for details.

## Architectural Specification

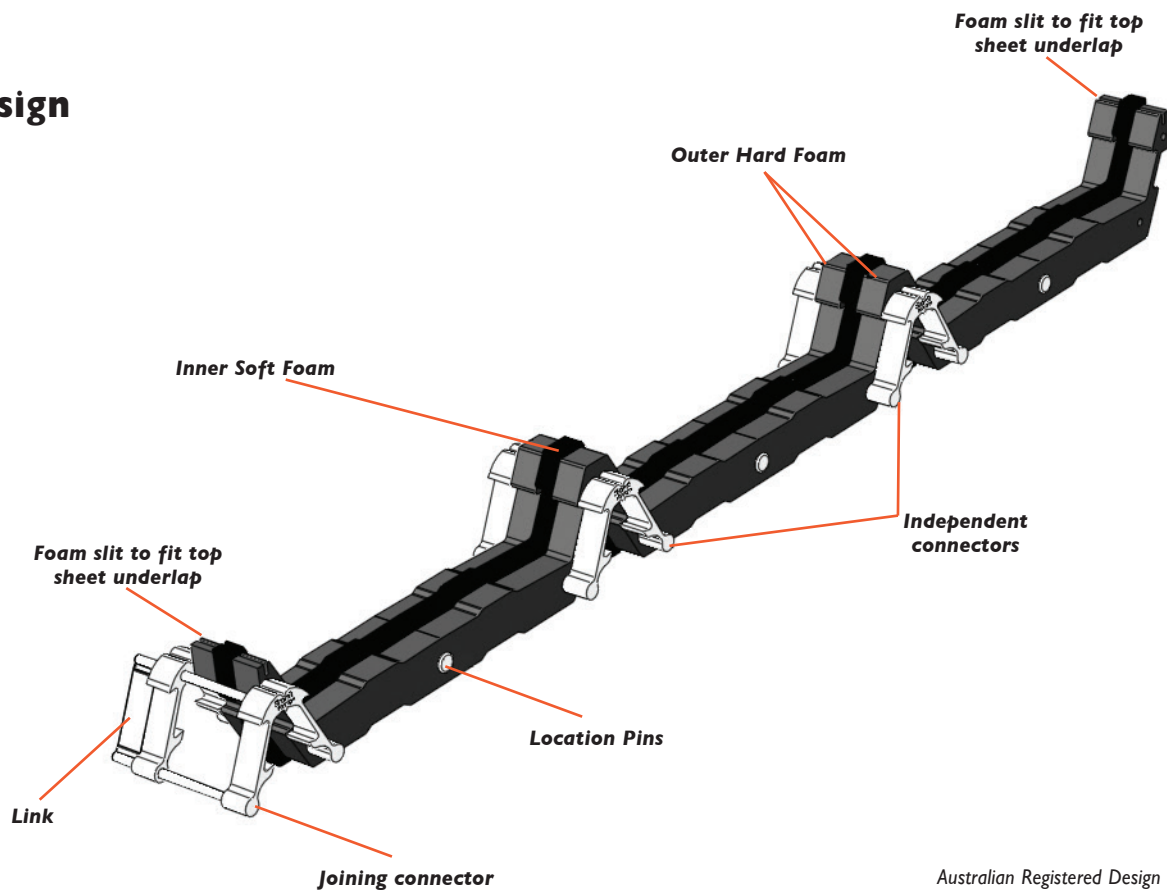
This specification may be added to that of the *Stramit Speed Deck Ultra*<sup>®</sup> decking to ensure that required performance and functional needs are met:

*The Stramit Speed Deck Ultra*<sup>®</sup> decking shall be installed in multiple overlapping lengths on a single plane using the **Stramit FarLap**<sup>®</sup> roof lap joint system fixed strictly in accordance with the manufacturer's instructions.

Where translucent sheeting is also to be used, add the following:

*Translucent sheeting joints that interface with the **Stramit FarLap**<sup>®</sup> roof lap joints shall be constructed using the **Stramit SkyLap**<sup>®</sup> joint system, fixed strictly in accordance with the manufacturer's instructions.*

## Design

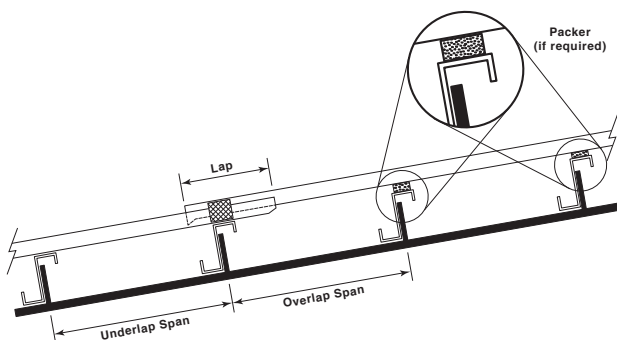


Australian Registered Design 329703  
Australian patent 2009 202 866

### Spans / Pressures

When used with the **Stramit FarLap**® roof lap joint system, the non-cyclonic spans and pressures provided in the **Stramit Speed Deck Ultra**® decking product technical manual and relevant Stramit Design Guides remain unchanged with the following conditions:

- the lapping spans at each joint shall be regarded as end spans for the purpose of determining wind and foot traffic capacity.
- to ensure drainage, the overlapping span should be no less than:
  - 1700mm for a 1 degree slope
  - 1200mm for a 1.5 degree slope
  - 850mm for slopes of 2 degrees or greater
 alternatively, shorter spans can be used if a 10mm durable packer is placed beneath the **Stramit Speed Deck Ultra**® clip at the support above the joint as detailed below.
- Where the end span adjacent to the joint on the upper level of sheeting is less than 1500mm, a 10mm durable packer should be placed below the Speed Deck Ultra® clip at the support above the joint. Where this span is



less than 1000mm, an additional 5mm packer should be used on the next support above, as shown.

Where a packer is used, the screw length needs to be commensurately longer. Contact Stramit for details.

### Cyclonic Areas

The **Stramit FarLap**® roof lap joint system for **Stramit Speed Deck Ultra**® can be used in cyclonic areas. Please refer to the Stramit® Cyclonic Areas Roof and Wall Cladding brochure on the Stramit® website [www.stramit.com.au](http://www.stramit.com.au) for details.

### Support Structure

Lap joints using the **Stramit FarLap**® roof lap joint system do not require purlin step joints. The supporting structural steel can be designed and detailed so that all the roof purlins are in the same plane. Cleats must be arranged to suit purlin spacings consistent with any required change in sheet spacing arising from the Spans/ Pressures clause above.

### Penetrations and Obstructions

No obstruction to the water flow should be placed across the **Stramit FarLap**® joint, nor should the joint be crushed by any load. All roof penetrations should be at least 1500mm away from the **Stramit FarLap**® joint.

### Translucent Sheeting

Where required, translucent sheeting must be specified to be lapped at the **Stramit FarLap**® joint using **Stramit SkyLap**® joint system for translucent sheeting. Translucent sheeting for the lower run should be fixed before laying decking on an upper run.



## Procurement

### Ordering

**Important:** Please note, when ordering *Stramit Speed Deck Ultra*® decking for use with **Stramit FarLap**® joint, allowance must be made for an additional overlap of 350mm at each lap joint along the roof run length:

- Bottom sheet + 200mm
- Intermediate sheet + 350mm
- Top sheet + 150mm

Sheets must be measured to ensure the **Stramit FarLap**® joint is installed over a supporting purlin.

**Stramit FarLap**® roof lap joint units or rolls for supply with *Stramit Speed Deck Ultra*® decking can be ordered from your nearest Stramit location or distributor of Stramit® products.

### Delivery/Unloading

Delivery can normally be made within 48 hours, subject to the delivery location, quantity and material availability, or can be at a pre-arranged date and time. Please ensure that suitable arrangements have been made for truck unloading, as this is the responsibility of the receiver. Please recover boxes and transfer to a recycling facility.

### Prices

Prices for **Stramit FarLap**® roof lap joint units or rolls (to be supplied with *Stramit Speed Deck Ultra*® decking) can be obtained from your nearest Stramit location or distributor of Stramit® products. As Stramit does not provide an installation service, ask your tradesperson for a supply & fix price. Contact your nearest Stramit location for the names of suitable tradespersons.

### Packaging

**Stramit FarLap**® roof lap joint units are supplied pre-packaged in recyclable cardboard boxes with 20 individual units (for 14m of roof joint width) and two spare links in each box.

Alternatively **Stramit FarLap**® can be purchased in pre-joined rolls of units to cover a joint length of 7m, packaged in a plastic bag.

## Related Products

### **Stramit FarLap**® Roll –

10 units of **Stramit FarLap**® pre-joined together for ease of installation

### **Stramit Speed Deck Ultra**® decking –

concealed fix roof sheeting

### **Stramit FarLap**® Turn-Up/Down Tool –

for sheet end preparation at *FarLap*® joint

### **Stramit SkyLap**® joint system for translucent sheeting

### **Stramit Universal Speed Deck Ultra**®

### Turn-Up/Down Tool –

for sheet end preparation at ridge and eave

### **Ridge Capping** –

standard or custom dimensions

### **Flashings** –

a range of custom flashings

### **Filler Strips** –

top and bottom; for eaves, ridge and joint sealing

### **Insulation & Roofing Mesh** –

a range of mesh, sisalation, plain & foil backed blanket

### **Translucent Sheeting** –

glass fibre sheeting in a range of shades and densities

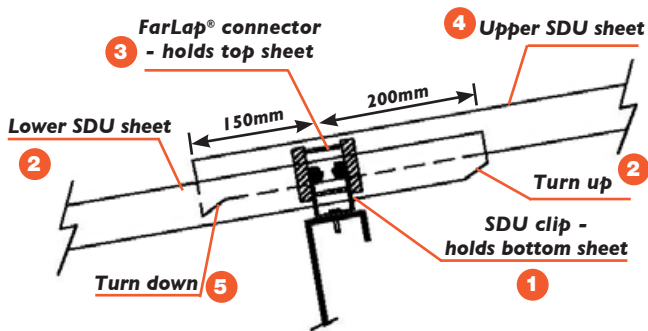
Note that the preferred arrangement for translucent sheeting, when used with the **Stramit FarLap**® roof lap joint system, requires that the sheet lap is at the same position and is connected using the **Stramit SkyLap**® joint system for translucent sheeting. Contact your nearest Stramit location for details.

# Installation

## Installation Procedure

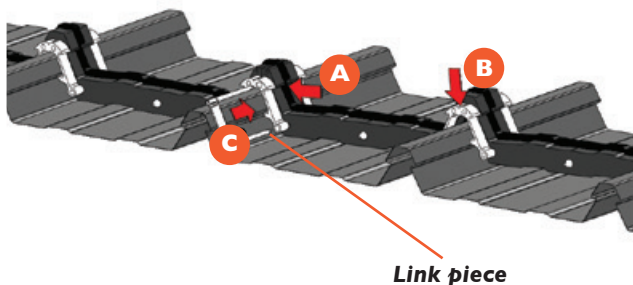
**Stramit FarLap**® roof lap joint units are readily installed. No additional fastenings are required. It is however important that the roofing sheets at each overlapping joint be carefully aligned. The summarised procedure is:

- 1 Alignment for the first row of clips for both the lower and all upper runs should be determined before commencing laying the deck on the lower run. This ensures the lower and upper runs are accurately aligned.
- 2 Install the lower deck sheet/s then turn-up the high end in every pan using the **Stramit FarLap**® turn-up/down tool.



- 3 Position the **Stramit FarLap**® roof lap joint units or rolls by simply snapping in to place 200mm from the sheet end on each rib, within 50mm of the *Stramit Speed Deck Ultra*® fixing clips on the purlin.

Join subsequent units or rolls using the nylon link pins that push into mating holes as shown in the three steps A to C below. This can be done one at a time just before installing on the sheets, or in a long roll of **Stramit FarLap**® units connected together prior to installation. Where a roll needs to be shortened, intermediate link pieces can be removed and units separated before re-inserting the link piece.



- 4 Commence the higher sheet run by carefully aligning edges with the first lower sheet and positioning with an overhang of 150mm.
- 5 Turn down the upper sheet end using the **Stramit FarLap**® turn-up/down tool.

- 6 Complete the upper sheet run.

- 7 Barge capping needs to accommodate the slight rise in the joint area.

An illustrated leaflet is provided with each order containing fixing instructions. Where translucent sheeting is used an installation leaflet is also provided for the **Stramit SkyLap**® joint system for translucent sheeting.



Completed lap joint

## **Walking**

We recommend caution be taken when walking on any roof. When walking on **Stramit**<sup>®</sup> decking always wear flat rubber soled shoes and place feet only in the pans except at supports, taking care to avoid the last pan or two near edges of the metal roof area.

**Walk only in pans, or on ribs at purlin supports**

## **Good Practice**

Stramit recommends that good trade practice be followed when using this product, such as that found in Australian Standards Handbook HB39.

## **Cutting**

**Stramit FarLap**<sup>®</sup> roof lap joint units can be easily cut across the foam section using a retractable box cutter or suitable sharp cutting implement. Do not cut the nylon connectors. Please dispose of any off-cuts considerately.

## **Additional Information**

### **Further Information**

As well as our standard range of Technical Manuals, Installation Leaflets, Case Studies and other promotional literature Stramit has a series of Guides to aid design.

These include:

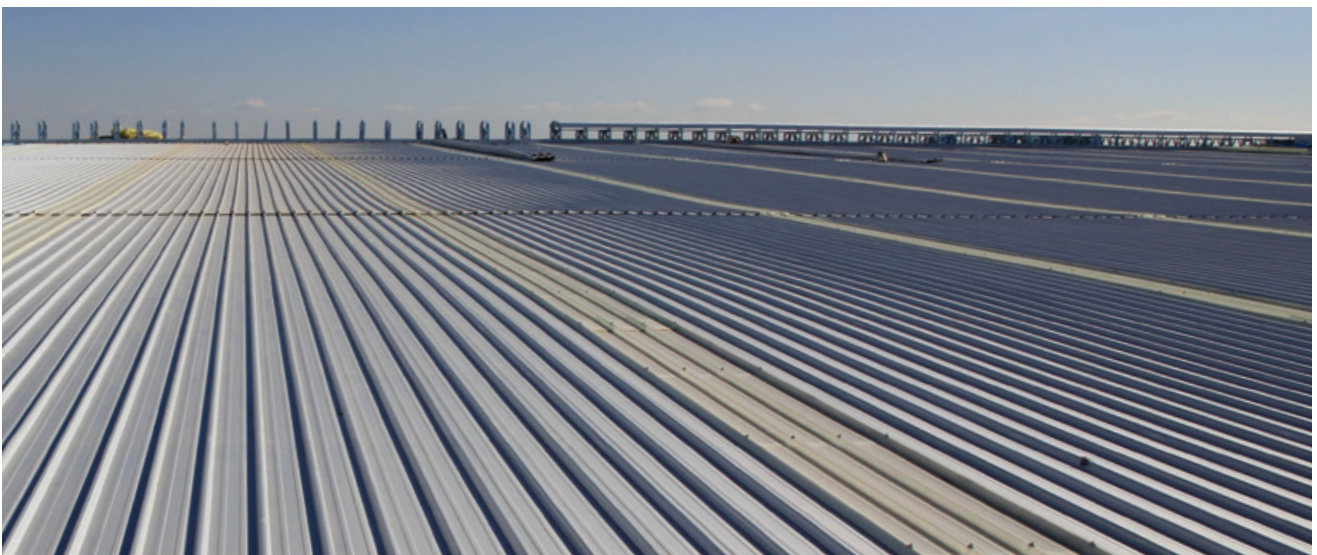
- Roof & Wall Flashing Guide
- Roof Slope Guide
- Foot Traffic Guide
- Concealed Fixed Decking
- Bullnosing, Curving and Crimping
- Acoustic Panels
- Cyclonic Areas
- Spring Curving Guide

Please contact your nearest Stramit location for any of these guides or other literature.

### **Other Products**

Stramit offers a wide range of building products, including:

- Purlins and girts
- Formwork decking
- Roof and wall sheeting
- Lightweight structural sections
- Truss components
- Gutters and downpipes
- Fascias
- Custom flashings
- Insulating products
- Fasteners







## Building Products

The Stramit web page can be found at:

[www.stramit.com.au](http://www.stramit.com.au)

Details of many **Stramit**® products can also be seen on the AIA site 'Product Selector' at:

[www.selector.com.au](http://www.selector.com.au)

		prices	availability	general	technical
contact numbers for information			products coating colours	other	advice product data
<b>SYDNEY</b> 33-83 Quarry Rd, Erskine Park NSW 2759	<b>phone</b> <b>fax</b>	<b>(02) 9834 0909</b> (02) 9834 0988		<b>(02) 9834 0900</b> (02) 9834 0988	
<b>CANBERRA</b> 4 Bass Street, Queanbeyan NSW 2620	<b>phone</b> <b>fax</b>		<b>(02) 6298 2500</b> (02) 6298 2533		
<b>COFFS HARBOUR</b> 6 Mansbridge Drive, Coffs Harbour NSW 2450	<b>phone</b> <b>fax</b>		<b>(02) 6656 3800</b> (02) 6656 3808		
<b>NEWCASTLE</b> 17 Nelson Road, Cardiff NSW 2285	<b>phone</b> <b>fax</b>		<b>(02) 4041 3400</b> (02) 4041 3423		
<b>ORANGE</b> 51 Leewood Drive, Orange NSW 2800	<b>phone</b> <b>fax</b>		<b>(02) 6360 9200</b> (02) 6360 9211		
<b>MELBOURNE</b> 2/1464 Ferntree Gully Road, Knoxfield VIC 3180	<b>phone</b> <b>fax</b>	<b>(03) 9237 6300</b> (03) 9237 6399		<b>(03) 9237 6200</b> (03) 9237 6299	
<b>ALBURY</b> 18 Ariel Drive, Albury NSW 2640	<b>phone</b> <b>fax</b>		<b>(02) 6092 3700</b> (02) 6092 3766		
<b>BENDIGO</b> Ramsay Court, Kangaroo Flat VIC 3555	<b>phone</b> <b>fax</b>		<b>(03) 5448 6400</b> (03) 5447 9677		
<b>HOBART</b> 57 Crooked Billett Drive, Brighton TAS 7030	<b>phone</b> <b>fax</b>		<b>(03) 6262 8788</b> (03) 6262 8712		<b>(03) 6262 8788</b> (03) 6262 8712
<b>ADELAIDE</b> 11 Stock Road, Cavan SA 5094	<b>phone</b> <b>fax</b>		<b>(08) 8219 2000</b> (08) 8262 6333		<b>(08) 8219 2000</b> (08) 8262 6333
<b>BRISBANE</b> 57-71 Platinum Street, Crestmead QLD 4132	<b>phone</b> <b>fax</b>		<b>(07) 3803 9999</b> (07) 3803 1499		
<b>TOWNSVILLE</b> 402-408 Bayswater Road, Garbutt QLD 4814	<b>phone</b> <b>fax</b>		<b>(07) 4412 3900</b> (07) 4412 3909		
<b>CAIRNS</b> Vickers Street, Edmonton QLD 4869	<b>phone</b> <b>fax</b>		<b>(07) 4034 6555</b> (07) 4034 6511		
<b>MACKAY</b> Brickworks Court, Glenella QLD 4740	<b>phone</b> <b>fax</b>		<b>(07) 4965 4000</b> (07) 4965 4012		<b>(07) 3803 9999</b> (07) 3803 1499
<b>MARYBOROUGH</b> 10 Activity St, Maryborough QLD 4650	<b>phone</b> <b>fax</b>		<b>(07) 4123 9500</b> (07) 4123 9508		
<b>ROCKHAMPTON</b> 41 Johnson St, Parkhurst QLD 4702	<b>phone</b> <b>fax</b>		<b>(07) 4921 5600</b> (07) 4921 5608		
<b>DARWIN</b> 55 Albatross Street, Winnellie NT 0820	<b>phone</b> <b>fax</b>		<b>(08) 7922 4600</b> (08) 7922 4608		
<b>PERTH</b> 605-615 Bickley Road, Maddington WA 6109	<b>phone</b> <b>fax</b>		<b>(08) 9493 8800</b> (08) 9493 8899		

TM and © Trademarks of Stramit Corporation Pty Limited. ABN 57 005 010 195 trading as Stramit Building Products

Part of Fletcher Building Group

DuPont™ and Zytel® are registered trademarks of E.I. du Pont de Nemours and Company

© Stramit Corporation Pty Limited. November 2017.

This document replaces all previous issues. Please destroy, or clearly mark as superseded, all previous issues.