

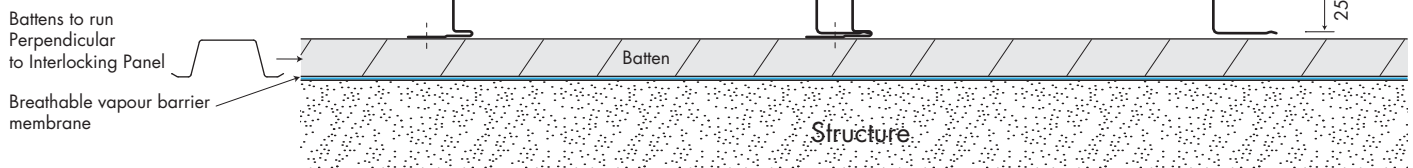
Steeline INTERLOCKING WALL PANEL

CLASSIC EURO PANEL RANGE WALL CLADDING

Panel is fixed to batten attached to main structure (concrete, brick, steel etc.) which provides a ventilation air gap. A breathable vapour barrier membrane is required between the structure and the batten.

Panel interlocking groove provides a variable express joint 5-20mm. Panel can be fixed vertically or horizontally.

INTERLOCKING PANEL EXPRESS JOINTS 5 - 20mm



Preparation

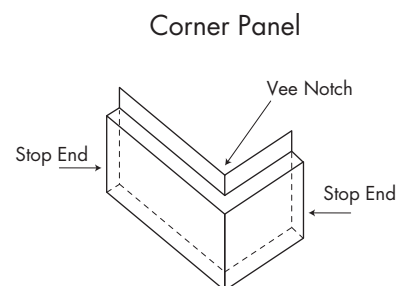
The battens must be rigid and in one plane at 600mm centres max.

Material Availability

- Colorbond®
- Colorbond® Ultra
- Colorbond® Metallic
- Colorbond® Matt
- Galvanised

Standard Interlocking Panel Specifications

Panel Depth and Cover	25 x 200	25 x 300
Express Joint Width -	5-25mm	
Panel Length -	Up to 6.0m*	
Minimum Pitch -	90° Walls only	
Batten Span -	600mm	
Stop End -	20mm Stop End	
Notching -	V Notch Corner	
Screws -	Timber - Wafer 10-12 x 25 Steel - Wafer 10-24 x 22	



Colorbond®

*Check with your local member for minimum length

Ph. 1300 STEELINE

steeline.com.au

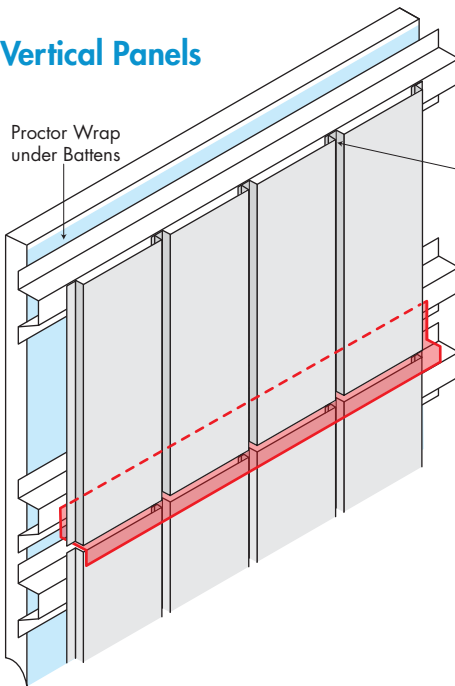
Steeline

Service over and above

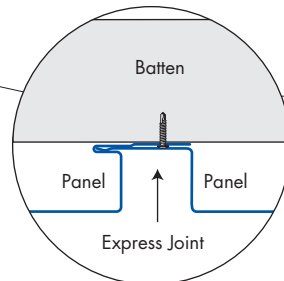
Steeline INTERLOCKING WALL PANEL

CLASSIC EURO PANEL RANGE WALL CLADDING

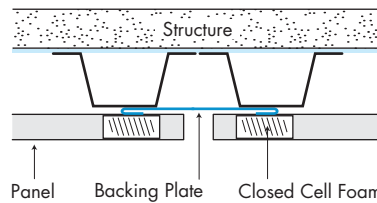
Vertical Panels



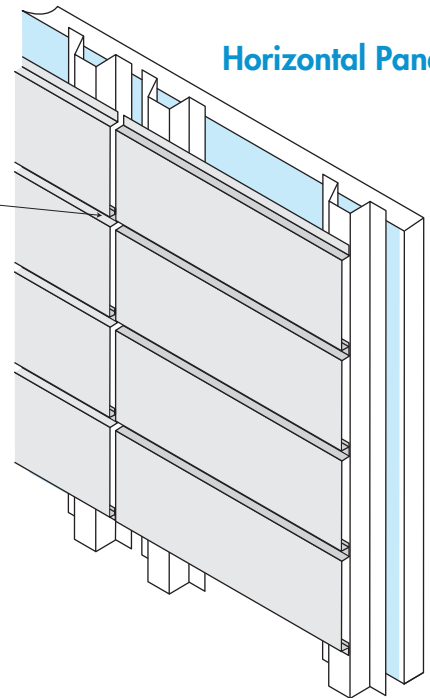
Express Joint



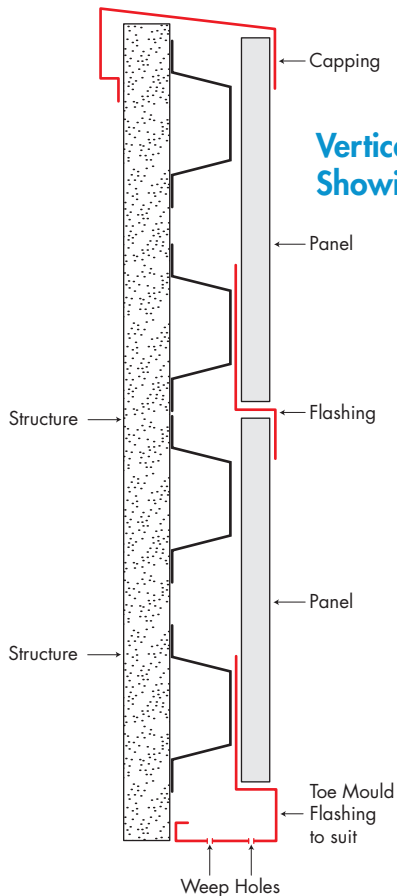
PLEASE NOTE:
Backing Plates
not shown for clarity.



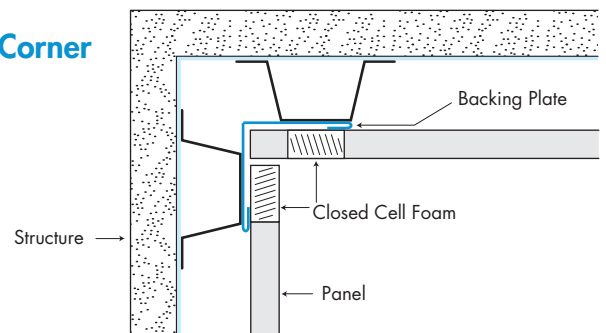
Horizontal Panels



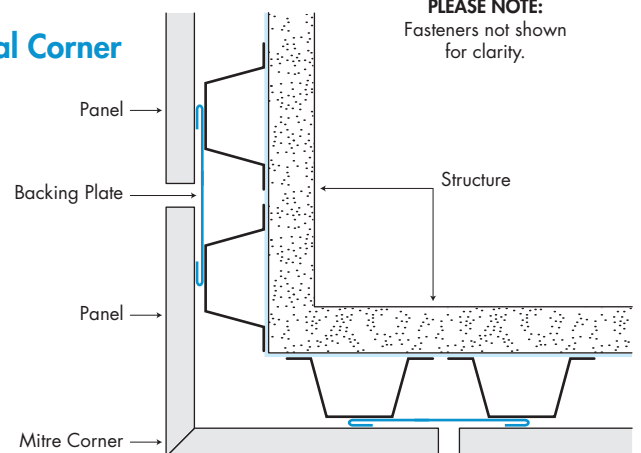
Vertical Panels Showing Flashing



Internal Corner



External Corner



PLEASE NOTE:
Fasteners not shown
for clarity.

Colorbond®

OIL CANNING

Oil Canning is a characteristic that is inherent in thin gauge metals. Internal stresses, expansion and contraction can cause a wavy surface on flat panels. The Architect and Builder need to be aware of the aesthetic effect that oil canning can have on the project. Recommendations to reduce the effect of oil canning can be found on the jhsstephenson.com web site.

Ph. 1300 STEELINE

steeline.com.au

ST53 V02 - 07/25 - Subject to change without notice



Service over and above