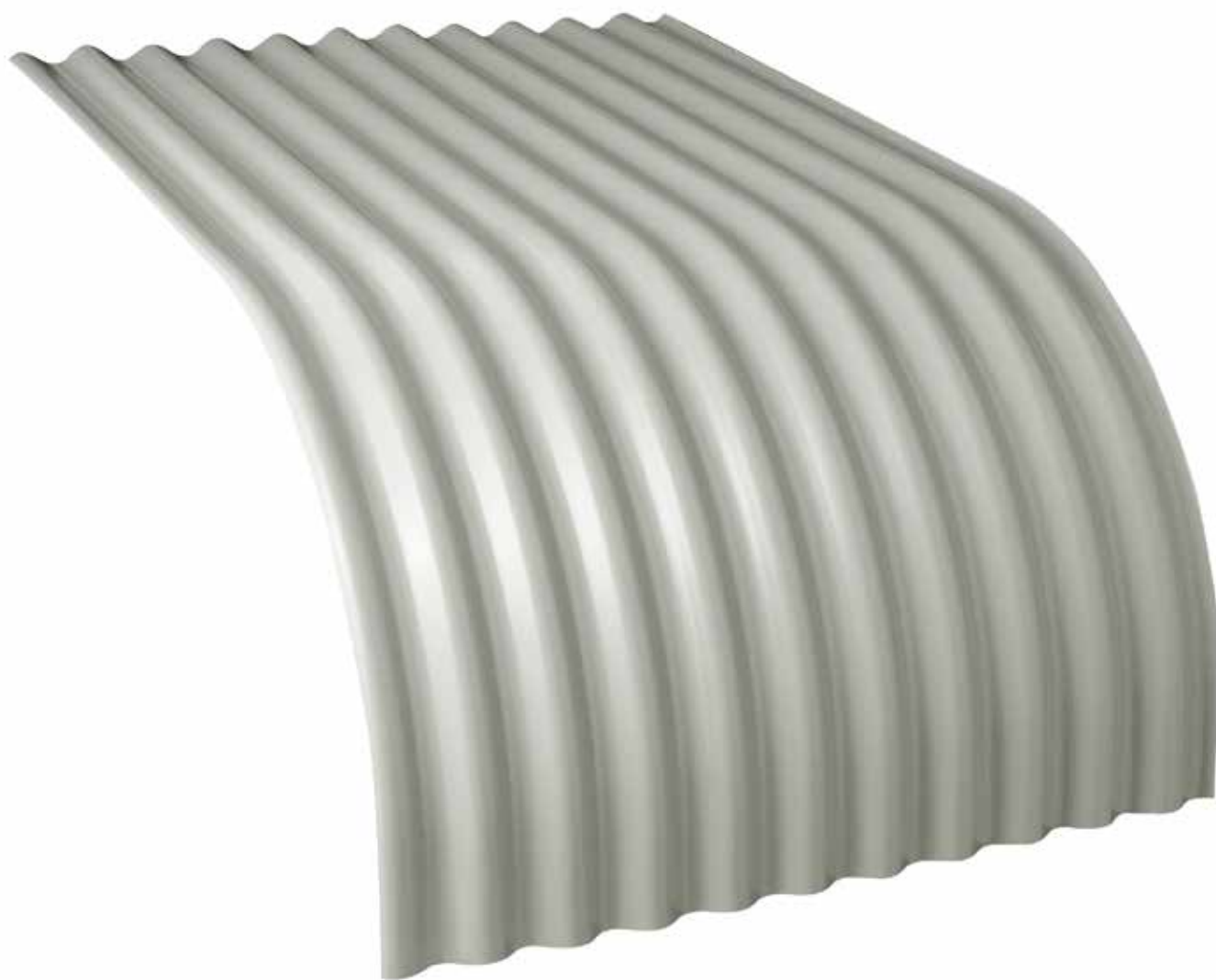


# Steeline Corrugated Curving

CORRUGATED 0.60 BMT  
AZ150 G300  
ST26



**Colorbond® Zincolume®**

Steeline Corrugated Curving is the ideal product to give your house that older colonial look. It is made from COLORBOND® or ZINCALUME® Steel, that is softer than normal roofing therefore allowing it to be formed into tight radius curves.

**Ph. 1300 STEELINE**

**[steeline.com.au](http://steeline.com.au)**



**Service over and above**

# Steeline Corrugated Curving

**CORRUGATED 0.60 BMT  
AZ150 G300  
ST26**

## Method Of Laying Corrugated Curving

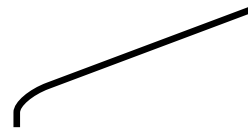
Lay the first sheet on the frame work taking into consideration the prevailing weather direction. Ensure that the nose of the sheet fits into the gutter correctly and touches all fixing points without any excessive pressure being applied. Begin your screw fixing on the overlap side progressively working your way up the sheet ensuring that the sheet remains square with the building. When fixing the second sheet you follow the same procedure but you must ensure that the first sheet remains level across the nose at all times otherwise you will start to get a wave effect along the run of sheets at each lap. You can prevent this by constantly checking that the sheets are level or fix a string line at the top of the curve, along the run of sheeting ensuring each sheet remains level. You will notice a saw tooth effect on the ends in the gutter, this is a natural occurrence and cannot be avoided; the saw tooth length should be approximately the same on each lap. Measure every third or fourth sheet from your start point to keep sheets square. Always take care to make sure radius of sheets fit properly together.

**NOTE: Minimum recommended radius to curve 400mm.**

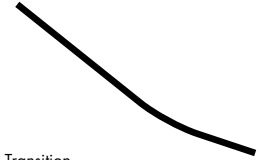
## Side lap fasteners

These are added at the midspans of the sheets for support spacings over 900mm for roofs and 1200mm for walls to give weather proofing. On the bends sufficient side lap fasteners are to be added to ensure absolute weather tightness. Use No 8x12 hex head type S self drilling screw with neo washer or blind rivet.

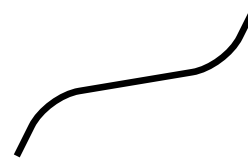
## Curve Designs



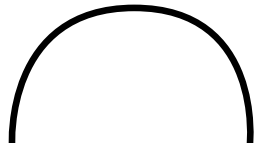
Bull nose



Transition



Reverse curve



180 Barrel vault



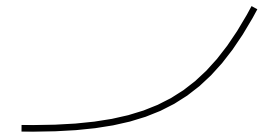
Cranked ridge



Old gothic



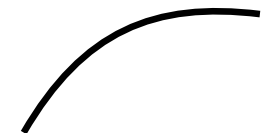
Double curve



Concave



Cranked double curve



Convex



Awning