

FIELDERS PROFILES
Flexibility is our Strength™



S-Rib Corrugated

Tough and Timeless in Every Sense



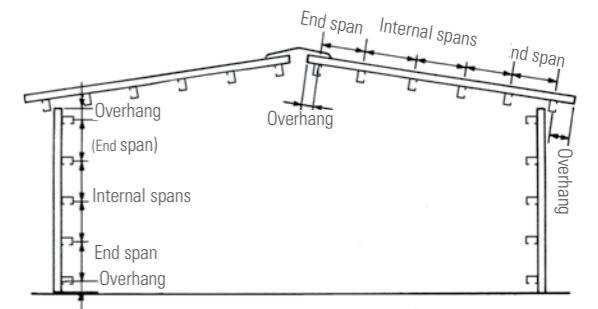
Product Specification

S-Rib™ Corrugated Material Specifications

Property	0.35 BMT	0.42 BMT	0.48 BMT	0.60 BMT	Notes
Total Coated Thickness	0.40	0.47	0.53	0.65	TCT
Mass / Unit Length (kg/m)	ZINCALUME®	2.75	3.30	3.70	1000 / (m/Tonne)
	COLORBOND®	2.80	3.36	3.77	
Mass / Unit Area (kg/m²)	ZINCALUME®	3.60	4.34	4.87	1000 / (m Mass/profile width)
	COLORBOND®	3.68	4.42	4.96	
2 nd moment of area about principal axis (10 ³ mm ⁴)	I _x	11	14	15	
	I _y	19510	23420	26760	
Section modulus about principal axis (10 ³ mm ³)	Z _x	1	2	2	
	Z _y	47	56	64	
Warping Constant (10 ³ mm ⁶)	I _w	1	1	1	1
Torsion Constant (mm ⁴)	J	13	23	35	68
Minimum Yield Strength	G550	G550	G550	G300	Base Steel Designation
Coating Class	Z600 (Heritage Galvanised)				Minimum Coating g/m ² of Zinc - Aluminium
Coverage (mm)	762				
Tolerance	Sheet Length ±7mm Cover Width ±4mm				
Thermal Expansion	2.9mm average per 5m at 50° C change				

Maximum Recommended Span (mm) S-Rib™ Corrugated Non Cyclonic

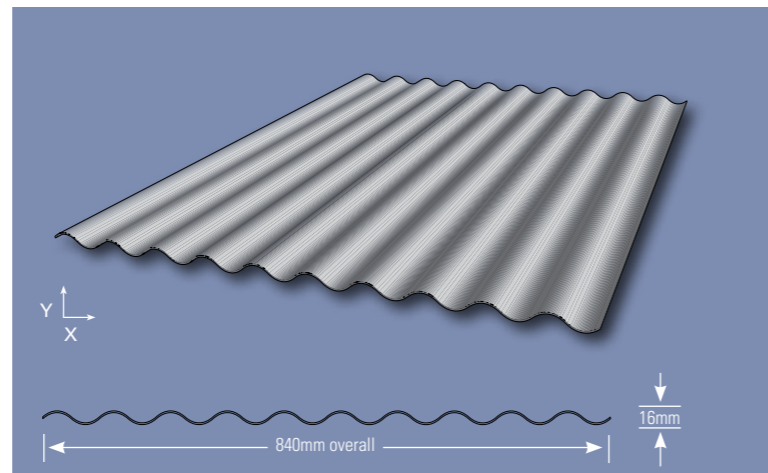
Span Type	0.35 BMT		0.42 BMT		0.48 BMT		0.60 BMT	
	Roof	Wall	Roof	Wall	Roof	Wall	Roof	Wall
End Span	N/A	1200	900	1350	1200	1800	900	1350
Internal Span	N/A	1600	1200	1800	1600	2400	1200	1800
Unstiffened Overhang	N/A	N/A	200	N/A	250	N/A	200	300
Stiffened Overhang	N/A	N/A	300	N/A	350	N/A	300	300



A reliable product that stands the test of time, Fielders S-Rib Corrugated can be used as either a roofing or a walling product. This profile can reflect a modern or traditional design, depending on the application. Complimented by Fielders' range of heritage products, a beautifully authentic restoration can also be achieved.

S-Rib Corrugated Product Specification

Opposite you will find a brief overview of some of the product's technical information which you or your builder may require regarding the Fielders' S-Rib Corrugated Sheet Profile. For more information and to read the complete product specifications and installation recommendations please visit fielders.com.au



Our most popular and versatile profile

- 0.35BMT for fencing and walling.
- 0.42BMT and 0.48BMT for roofing.
- 0.60BMT 'soft feed' for bullnose and curved roofing.
- Traditional heavy coated Galvanised Z600 steel (two ounces per square foot).

S-Rib™ Corrugated Pierce Fixing - Non Cyclonic

Fixing Supports	Crest Fixing	Valley Fixing (Wall only)	Side Lap Fixing
Steel 1.0 to 3.5mm	12-14x35mm Metal Tek's hexagon head with seal	10-16x16mm Metal Tek's hexagon head with seal	10-16x16mm hexagon head Tek's screws with seal
Timber Hardwood	M6-11x50mm Roof Zips hexagon head with HiGrip & seal	M6-11x25mm Roof Zips hexagon head with seal	
Timber Softwood	M6-11x50mm Roof Zips hexagon head with HiGrip & seal	M6-11x25mm Roof Zips hexagon head with seal	
Metal Battens (0.55 to 1.0mm)	M6-11x50mm Roof Zips hexagon head with HiGrip & seal	15-15x25mm Metal Batten Tek's hexagon head with seal	

Pierce Pierce Fixing

Fasteners must be selected to match the life expectancy of the cladding material. Recommendations from fastener manufacturers should be sought. Only fasteners complying with AS 3566:2002 and those that are compatible with the roofing material should be used for its fastening.

Side Lap Fixing

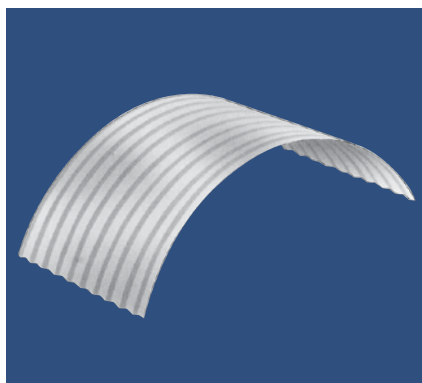
It may be necessary to use side lap fasteners at mid spans when using S-Rib at maximum spans. These will help to hold the sheet laps firmly in place and maintain a weather-proof joint.

Curving S-Rib™ Corrugated

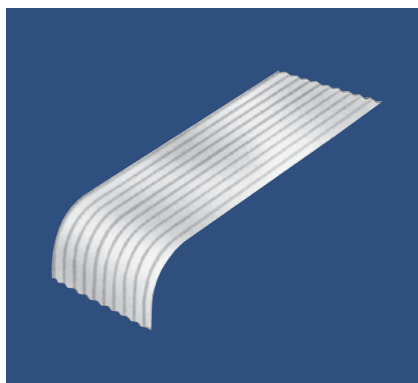
Curving quality corrugated is manufactured from G300 sub-strate (0.60 BMT). It is consequently more ductile, enabling specialist tradesmen using precision curving machines to form sheets to traditional heritage shapes and challenging architectural details down to radii as tight as 450mm. Fielders has a dedicated roll forming machine for G300 thus avoiding any inconsistency arising out of changing over from G550 Hi-tensile coil.

Curving Orders

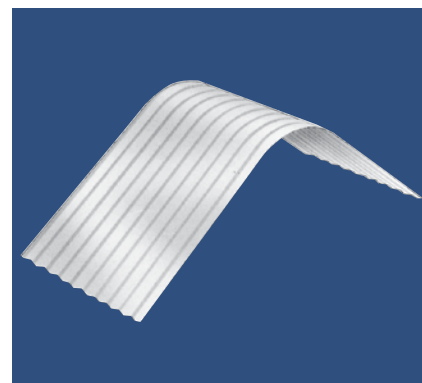
Typical Curves



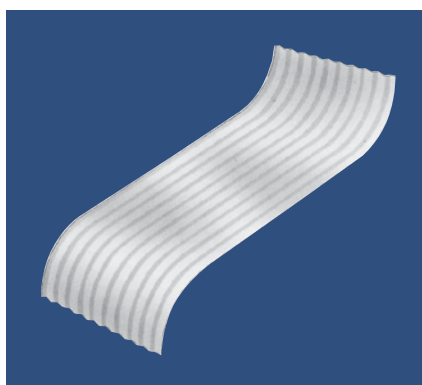
Radius Curve (Deep Curve)



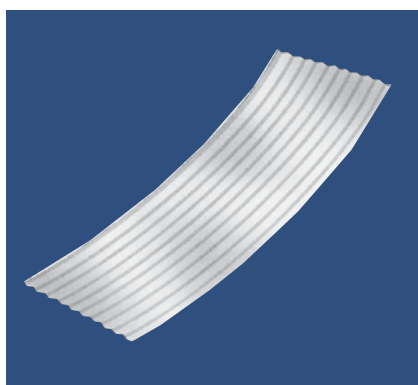
Bull Nosing



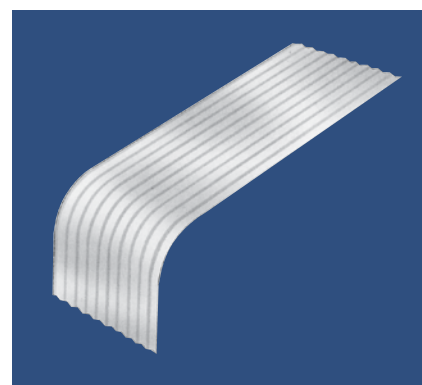
Ridge Curve



'S' Curve



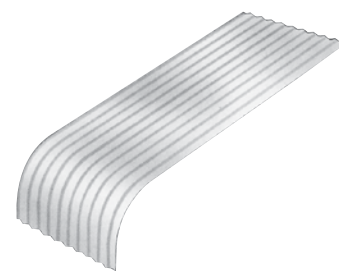
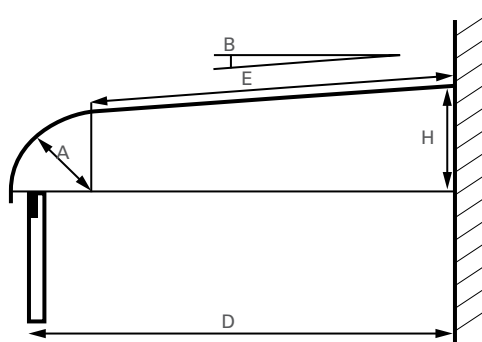
Curving to Underslung or Overslung



Bullnosing with extended straight section

Bullnosed

A	Radius (minimum 500mm)	mm
B	Pitch or fall	mm
D	Wall to outside fascia	mm
E	Straight length	mm
H	Height	mm



Concave

D	Wall to outside fascia	mm
H	Height	mm
X	Dip from Straight Line	mm

