

# REDCOR®

## weathering steel

### AS/NZS 1595 – CW300A

#### General description

CW300A is a high phosphorous structural weathering steel with a minimum yield strength of 300MPa.

#### Typical uses

Building facade  
Architectural features  
Heat exchanger elements

#### Features & benefits

Reduced atmospheric corrosion when used in the correct environments  
Guaranteed minimum strength levels  
Good formability

#### Warnings

This material should be used in conjunction with the appropriate structural design and welding standards.

The weathering properties of this material is due to the formation of an impervious oxide layer through the use of alloy additions. Damage to this layer, or environmental conditions affecting the development of this layer, will impact on the effectiveness of the corrosion resistance.

Colour retention across welds can be achieved by appropriate electrode selection. Welds may be susceptible to hot cracking.

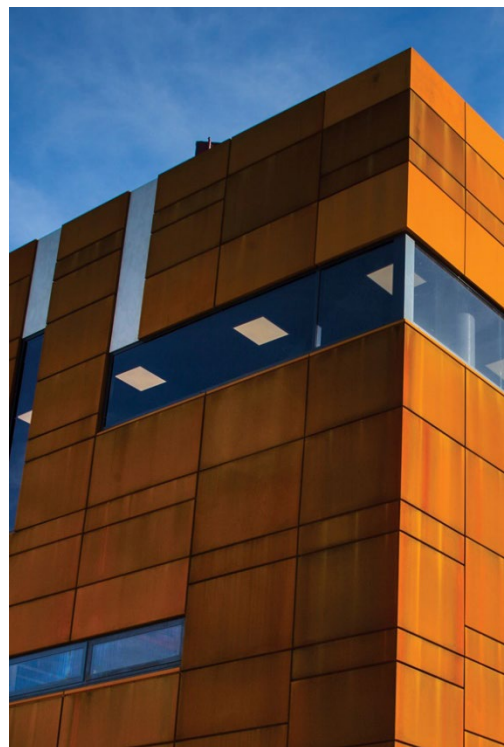
Weathering steels are not recommended without further protection for buried or submerged situations or for applications exposed to concentrated industrial fumes or severe marine conditions.

Oxide staining of surrounding areas may occur due to run-off from this material.

Material should be stored under cover to avoid issues with storage related corrosion.

Material should not be used for roofing applications

Refer to BlueScope Technical Bulletin TB-26 for more information regarding the use of this material.



## Australian and International Standards

AS/NZS 1595:1998 (R2016)

AS/NZS 1365:1996 (R2016)

ISO 9001:2015 Quality System Certified

## Supply conditions

	Normal
Thickness Range	0.7 – 2.5 mm
Width Range	1155 – 1250 mm
Surface Finish	Cold Rolled, Matte Finish, Light Oil or Un-Oiled
Edge Condition	Untrimmed (Mill Edge) / Trimmed Edge
Flatness	Class A (Sheet and Plate)
Certification	BlueScope

## Chemical composition

Element	Guaranteed %
Carbon	0.15 max
Silicon	0.15 – 0.75
Manganese	1.60 max
Phosphorus	0.055 – 0.16
Sulfur	0.04 max
Chromium	0.35 – 1.05
Nickel	0.55 max
Copper	0.15 - 0.50

All values shown refer to the relevant Australian Standard unless otherwise stated

## Mechanical properties

Tensile Properties (Transverse)		Thickness (mm)
		$0.7 \leq t \leq 2.95$
Yield Strength (MPa)	Guaranteed Min	300
Tensile Strength (MPa)	Guaranteed Min	450
Elongation $5.65\sqrt{S_0}$ (%)	Guaranteed Min	20

Fire resistance

Regulation	Deemed
National Construction Code NCC2022, Vol. 1, Part C2D10, 5b	Non-combustible

RedCor®

**[steel.com.au](https://steel.com.au)**

To ensure you have the most current information

**1800 024 402**

[steeldirect@bluescopesteel.com](mailto:steeldirect@bluescopesteel.com)  
For more information contact Steel Direct



The information contained in this datasheet is provided by way of general information about this product only, and has not been prepared with your specific needs in mind. We recommend that you seek BlueScope's advice as to the suitability of this product for the purpose(s) for which you propose to use it. To contact BlueScope for advice about your proposed use of this product, please contact Steel Direct. REDCOR®, BlueScope and the BlueScope brand mark are registered trade marks of BlueScope Steel Limited. All rights reserved. © 2025 BlueScope Steel Limited ABN 16 000 011 058.