

CYCLONIC LIMIT STATE SPAN TABLES

0.42 BMT CORODEK[®] RESIDENTIAL ROOFING

40 x 0.75mm Battens

CYCLONE WASHERS FITTED

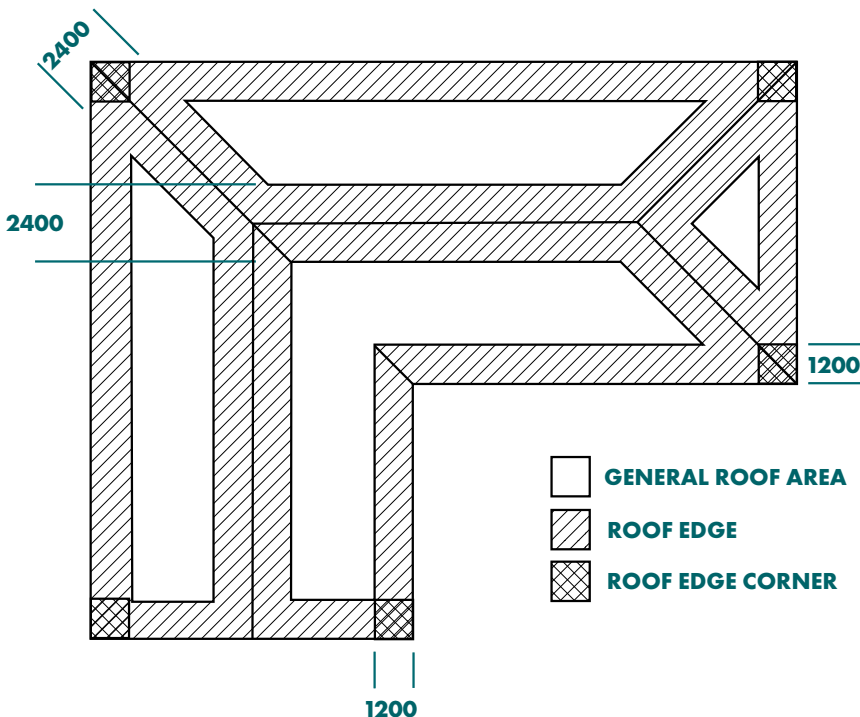
WIND CATEGORY	900mm TRUSS SPACING			1200mm TRUSS SPACING			
	Constant Batten Spacing	Variable Batten Spacing			G	RE	RC
		G	RE	RC			
C1	850	1350	1050	790	1250	800	590
C2	570	1130	720	530	850	540	400
C3	450*	760	490	450*	570	370	350*

NO CYCLONE WASHERS FITTED

C1	690	1330	890	690	1250	800	590
C2	490	930	630	490	840	540	400
C3	450*	670	450	450*	570	370	350*

* Fasteners fixed to every rib.

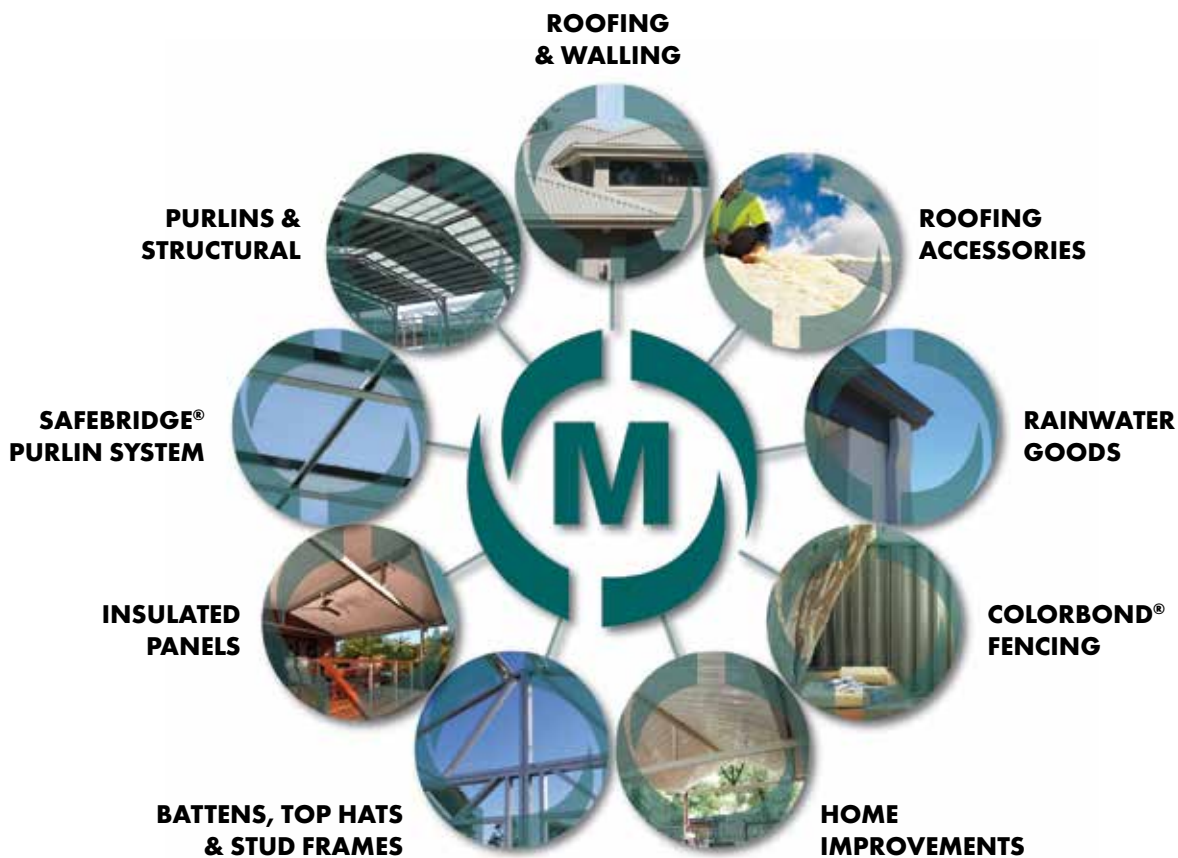
NS = Not Suitable, G = General Areas, RE = Roof Edges, RC = Roof Corners.



NOTES

1. This table is for use on residential projects that fall within the requirements of AS 4055 or AS 1684.
2. This table has been prepared by LCJ Engineers Pty. Ltd. and is based on the Low High Low testing completed by the Cyclone Testing Station (CTS), School of Engineering, James Cook University. The results of this testing are outlined in the test reports TS716 and TS638 produced by the CTS. Ultimate cyclic wind load tests were NATA accredited tests.
3. This table has been based on an ultimate roof sheeting fixing to batten load of 0.89kN. If the fixing capacity of the roof sheeting to batten is less than this the table may not be valid.
4. Roof sheeting shall be crest fixed to supports with M6 - 11 x 50mm Roof ZIPS self drilling screws. Fixings shall be in accordance with the manufacturers recommendations and shall be at every second rib.
5. Maximum batten spacings shown are only applicable to battens spanning three or more equal end spans. Maximum batten spacings nominated for edges must be maintained within 1200mm of edges of all eaves and ridges, maximum batten spacings nominated for corners must be maintained within 1200mm of two adjacent edges (refer to figure for guidance).
6. The spacings in the table are applicable for batten overhangs of up to 300mm. Batten overhangs greater than 250mm will exceed the recommended serviceability limit for roof traffic loads of 1.1 kN.
7. Battens shall be fixed to timber supports with 2 x M5.5 x 40 Batten ZIPS. All supports shall have a minimum joint group of JD4 and shall be 30mm wide minimum.
8. This information provided is as far as possible accurate at the date of publication, however, prior to use Metroll recommend you obtain qualified expert advice confirming the suitability of product(s) and information obtained herein.

Can we assist with any additional Steel Building Products?



QLD

Cairns	07 4054 0888
Townsville	07 4779 8266
Mackay	07 4968 1255
Rockhampton	07 4920 0900
Bundaberg	07 4155 5999
Toowoomba	07 4634 6144
Sunshine Coast	07 5493 7872
Brisbane	07 3375 0100

NSW

Lismore	02 6622 6677
Tamworth	02 6765 4799
Newcastle	02 4954 5799
Sydney	1300 766 346
Dubbo	02 6883 4800
Wagga Wagga	02 5924 4500
Canberra	02 6298 2777

VIC

Preston	03 9480 3744
Laverton	03 8369 8300
Geelong	03 5248 2006
Ballarat	03 5335 6416
Pakenham	03 8710 9300

SA

Adelaide	08 8282 3300
----------	--------------

TAS

Launceston	03 6335 8555
------------	--------------

NT

Darwin	08 8935 9555
--------	--------------

WA

Perth	08 9365 5444
Bunbury	08 9796 9796
Albany	08 9841 6966

26 Metroll Branches Nationwide

Visit our website
metroll.com.au



All reasonable care has been taken in the compilation of the information contained in this brochure. All recommendations on the use of Metroll products are made without guarantee as conditions of use are beyond the control of Metroll. It is the customers responsibility to ensure that the product is fit for its intended purpose and that the actual conditions of use are suitable. Metroll pursues a policy of continuous development and reserves the right to amend specifications without prior notice. The Metroll M and Logo are registered trademarks of Metroll. COLORBOND®, ZINCALUME®, GALVSPAN® steels are all registered trademarks of BlueScope Steel Limited.