

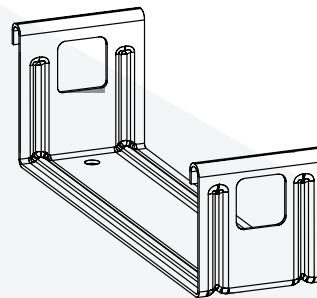
LONGLINE 305[®] WA

This document is to be read in conjunction with the LYSAGHT[®] Cyclonic Area Design Manual current at the time of publication.

The information is based on full-scale testing with low-high-low pressure sequence for cyclonic areas.

LONGLINE 305[®] WA STRENGTH LIMIT STATE WIND PRESSURE CAPACITIES (KPA) 0.70MM BMT

Span (mm)	Single & End	Internal
600	7.55	8.60
900	5.50	6.60
1200	3.95	5.05
1500	2.90	3.85
1800	2.45	3.00



1 clip per sheet per support, 2 fasteners per clip.
Fasteners Buildex #10-16x16 Metal Tek[®] Wafer Head or equivalent.

Notes:

1. The pressures are applicable when the cladding is fixed to a minimum of 1.5mm BMT steel.
2. More detailed information (including overhangs) are available in the LONGLINE 305[®] WA brochure.

DISCLAIMER, WARRANTIES AND LIMITATION OF LIABILITY

This publication is intended to be an aid for all trades and professionals involved with specifying and installing Lysaght products and not to be a substitute for professional judgement.

Terms and conditions of sale available at local Lysaght sales offices.

Except to the extent to which liability may not lawfully be excluded or limited, BlueScope Steel Limited will not be under or incur any liability to you for any direct or indirect loss or damage (including, without limitation, consequential loss or damage such as loss of profit or anticipated profit, loss of use, damage to goodwill and loss due to delay) however caused (including, without limitation, breach of contract, negligence and/or breach of statute), which you may suffer or incur in connection with this publication.

© Copyright BlueScope Steel Limited 14 January, 2016

WWW.LYSAGHT.COM

Technical enquiries:
steeldirect@bluescopesteel.com or call 1800 641 417

LYSAGHT[®] and LONGLINE 305[®] are registered trademarks of BlueScope Steel Limited, ABN 16 000 011 058. Tek[®] is a registered trademark of ITW Buildex. The LYSAGHT[®] range of products is exclusively made by or for BlueScope Steel Limited trading as Lysaght.

