

# CA2S-E steel

## General description

Cold-rolled, skin-passed commercial drawing steel guaranteed for moderate forming and pressing with a surface suitable for exposed applications.

## Typical uses

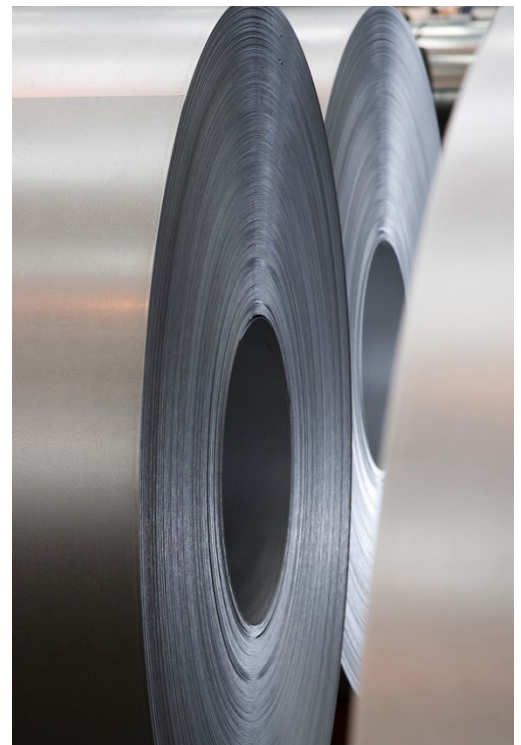
Office furniture, shelving.

## Australian and International Standards

AS/NZS 1595:1998

AS/NZS 1365:1996 (R2016)

ISO 9001:2015 Quality System Certified



## Guaranteed properties of steel base

Mechanical Properties	Guaranteed Value
Yield Strength, MPa (transverse tensile)	260 max
Elongation on 80mm, ( $\geq 0.40\text{mm} < 0.60\text{mm}$ ) %	30 min
Elongation on 80mm, ( $\geq 0.60\text{mm} < 0.80\text{mm}$ ) %	32 min
Elongation on 80mm, ( $\geq 0.80\text{mm}$ ) %	33 min
180° Transverse Bend (L axis)	0 t

## Chemical composition of steel base

Chemical Properties	Guaranteed Maximum %
Carbon - C	0.10
Manganese - Mn	0.45
Phosphorus - P	0.030
Sulfur - S	0.03

## Dimensional capabilities

Thickness Range (mm)	Maximum Width (mm)
0.50 – 3.20	1550

Notes: Not every combination of thickness and width may be available. Supply conditions may be subject to dimensional restrictions and are subject to BlueScope Sales and Marketing confirmation. Slitting and shearing available on request from BlueScope Sales Offices. For requirements outside the standard product range please contact your local Sales Office.

## Supply conditions

Attribute	Normal	Optional
Surface Condition	Matt	Lustre
Surface Treatment	Oiled	Not Oiled
Branding	Not Branded	-
Tolerance - Dimensions	Class A	Class B
Tolerance - Flatness	Class A	Class B
Edge Condition	Trimmed Edge	Mill Edge

Important Notes: Optional supply conditions may be subject to dimensional restrictions

## Fabricating performance

Method	Rating
Bending	5
Drawing	3
Pressing	3
Roll Forming	5
Welding (design must allow for some strength reduction near welds)	5
Painting Pre-treatment	5

Where: 1 = Limited to 5 = Excellent or NR = Not Recommended

The ratings in this table are general indicators only, given as a guide to fabricating performance.

## Fire hazard properties

---

Test & Evaluation Method	Result
Combustibility test for materials (AS 1530.1-1994 (R2016))	Not deemed combustible (steel substrate) #

# These test results relate only to the behaviour of the test specimens of the material under the particular conditions of the test and they are not intended to be the sole criterion for assessing the potential fire hazard of the material in use.

## Important information

---

Material should be used promptly to avoid the possibility of a storage related corrosion. Oiling improves corrosion resistance, but oiled product should be used within three months.

---

**[steel.com.au](https://steel.com.au)**

To ensure you have the most current information

**1800 024 402**

[steeldirect@bluescopesteel.com](mailto:steeldirect@bluescopesteel.com)  
For more information contact Steel Direct



---

The information contained in this datasheet is provided by way of general information about this product only, and has not been prepared with your specific needs in mind. We recommend that you seek BlueScope's advice as to the suitability of this product for the purpose(s) for which you propose to use it. To contact BlueScope for advice about your proposed use of this product, please contact Steel Direct. BlueScope and the BlueScope brand mark are registered trade marks of BlueScope Steel Limited. © 2024 BlueScope Steel Limited ABN 16 000 011 058. All rights reserved.